



Congregation Beth El Bulletin

Congratulations to Dr. Craig Schranz 2017 Blue Yarmulke Man-of-the-Year Congregation Beth El Men's Club



Sivan - Av 5777
June - July 2017

Beth El will host our local Conservative synagogues portion of the Seaboard Region in honoring men who have contributed greatly to their club and/or synagogue on Sunday, June 4th at 10 AM.

We will also install Alex Pomerantz as President of the Seaboard Region of the Federation of Jewish Men's Clubs.



Tisha B'Av Observance with Seudat Mafseket (Pre-Fast Dinner) Monday Evening, July 31st – 6:30 pm to 8:30 pm at Temple Israel

Join us for dinner, a discussion and the chanting of Megilat Aicha (Lamentations) in observance of this saddest day on the Jewish calendar.

(\$10 per person, please RSVP to the office if you plan to attend the dinner.)

6:30 pm – Dinner and Discussion led by Rabbi Panitz and Rabbi Arnowitz

7:15 pm – Services and Chanting the Megillah

If you have not experienced the ritual of the reading of Lamentations, you won't want to miss it. It is a very sad, but very beautiful ritual.

Making it a Prayerful Summer By Jeffrey M. Arnowitz

We are entering the summer season, a time when our programming calendar slows down noticeably. This is not an accident and not simply a time for the synagogue leadership to regroup and work on next year's calendar. It is a time to stop doing so much; instead to reflect – reflect on our relationship with the community, reflect on our relationship with God, reflect on our relationship with our own neshama (soul). We have a built in process for this kind of reflection: prayer.



Rabbi Jeffrey M. Arnowitz

These summer months are historically meant to be a time for prayer and reflection, and I don't think it is simply because our ancestors lived in a country where it was too hot to move in the summer. It is all part of our natural calendar cycle. We start reflecting and spending time at prayer in the summer as a lead up to the High Holidays. When we get to the fall, we want to be ready to do real soul-work on Rosh HaShanah and Yom Kippur.

So, I want to encourage you during these months of June, July and August to make a special effort to join us in synagogue on a Friday night or Saturday morning, maybe once a month, maybe more. Starting in July and August, we'll have casual summers, so you don't even need to dress up. Come join us for prayer, get to know our new Siddur Lev Shalem, (the prayer book designed like our High Holiday mahzor) and reflect on what synagogue life and relating to God mean to you. We will spend some time in shul reflecting on those things together too.

In the meantime, as we are spending more time outside during the summer, I encourage you to take a moment and pause to appreciate the beauty of creation, perhaps by incorporating these blessings into your experiences.

Upon seeing spectacular mountains, deserts, lightning, earthquakes, hurricanes, astronomical phenomena, and impressive bodies of water:

Baruch Ata Adonai, Eloheinu Melech HaOlam, oseh ma'aseh vereishit.

Blessed are You, Lord our God, King of the Universe, Who forms the work of Creation.

Upon seeing the ocean:

Baruch Ata Adonai, Eloheinu Melech HaOlam, she'asa et ha'yam ha'gadol.

Blessed are You, Lord our God, King of the Universe, Who made the Great Sea.

We have a blessing for almost anything special that we see. In fact, sometimes it is the blessing that reminds us that the thing is special and that we should stop and be grateful. Summer is the time to enjoy our surroundings a little more, and Judaism provides the tools to do just that in the form of these blessings and in the form of a community to share them with.

This coming year will be another full one at Beth El. We are especially excited for our "Beth El Celebrates the Arts" programming and of course we will still have all of our other excellent classes and social opportunities. So, let's take full advantage of this summer to relax and connect spiritually through prayer, so that we return refreshed, spiritually recharged and ready for another great programming year at Beth El.

A message from our synagogue president, Betsy Karotkin

Congregation Beth El Welcomes Park Place School

Let us... "find a way to think creatively about the future and take risks and to remind ourselves of a profound and unrelenting truth: We who have been blessed with a legacy of moral courage must find our courage anew. We must work together - through acts of love and kindness, justice and courage - to turn the tide of history."

Rabbi Sharon Brous, founding rabbi of IKAR



Among the many wonderful things that have taken place in this first year of my presidency, the newest and one of the most exciting is this: Beth El will be sharing its education wing with Park Place School as of July 1st!

Under Jerry Kantor's leadership, the Board began to discuss the possibility of finding a school to rent our education wing during the week. Think about this: there are 2,912 hours in 52 work weeks and Beth El occupies the space for around 60 hours!

We asked Murray Rosenbach (S. L. Nusbaum) to help us with a search, and he readily agreed. While we hoped to find an organization that needed some space, we knew it would be difficult. The most likely renter would be a pre-school, but Kindergarten through First Grade classrooms need to have bathrooms and water in their rooms, which our school does not have.

Just a few months ago, we had a call from Pastor McBride from New Life Church, who referred Park Place School to us. It was a match made in Heaven, for the school begins with Second Grade and will go through Sixth Grade this year.

The Park Place School began as a pilot project in 1996 - "Project Rebound." Its success in helping at risk children was the impetus for a bona fide school. At the end of the first three years, students had an average gain of 40% in math and 28% in reading, and so the school grew with private donations, NAP credits sold to businesses, and grants.

This partnership offers several opportunities to Beth El. The first is obvious: it will provide a steady stream of revenue for us. Perhaps less obvious and just as important is that Park Place School will offer us an opportunity for tikun olam. How many of us have talents and expertise to share with these young, beautiful children?! Even our Bar/Bat Mitzvah students can make a difference.

Sharon Brous, our "Tidewater Together" scholar just a few years ago, noted:

"A core characteristic of a vibrant Jewish organization is authenticity...it offers people meaning and lives of sacred purpose."

And, as Rabbi Arnowitz added, "Having Park Place School share space at Beth El will be good for our soul."

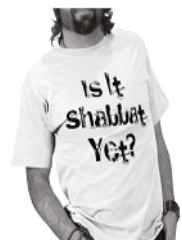
In the next coming months, I will let you know how *you* can help and be involved with our new neighbors and friends.

It's Casual Summer at Beth El!

We are dressing down starting July and continuing through August.

No Jacket? No Tie? No Problem!

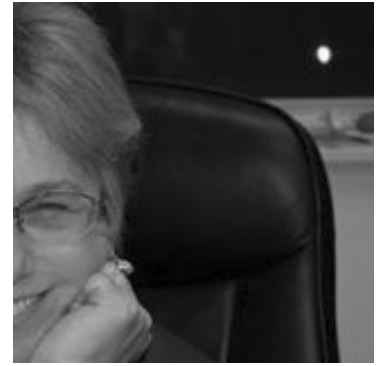
Guidelines: While we are going casual, we still want to be respectful. So, we discourage jeans and shorts, but other pants are okay (even encouraged) for men and women.



Let's all be comfortable in our spiritual home this summer!

“What Do Jewish Educators Do Over the Summer?”

In the Broadway musical “Camelot.” Guinevere and King Arthur wonder aloud “What do the Simple Folk do?” in their ordinary lives. Well, school’s “out” for summer and so there is nothing on my calendar for any of the Sunday mornings in June, July, and August. Some Beit Sefer Shalom students might be interested in knowing what Mrs. ‘W’ does when she’s not waiting at the school door to greet their arrival. Does she still set her alarm clock for a bright and early 6:00 AM? Leaving the shades up allows the sun to alert me it’s time to ‘rise and shine.’ Does she go to minyan on her summertime Sunday day off? Not every week but from time to time, yes, she does. On the other hand, she attends Tuesday morning minyan every week and Shabbat morning services even during the lazy, hazy, and occasionally crazy days of summer so if you come to shul, you will find her sitting in her regular seat (rabbi’s side on the main aisle between rows C and F). And what about studying over summer ‘break;’ does she take time to learn anything over vacation? Most definitely! Keeping my Hebrew skills sharp is vital and I meet with my Torah study partner year ‘round on Thursday afternoons to delve into the weekly Torah portion.



Reviewing materials that will be used over the coming year requires spending lots of time reading. There are many fall holiday programs to plan and prepare for as well as working with teachers to ensure the new school year will begin smoothly. In addition to all of that, this summer I’ll be working closely with the staff of Park Place School as they prepare to call our school wing home. This is an exciting time and I, for one, am looking forward to seeing the faces of lots of students all week long come mid-August. They are adding a sixth grade ,and I have offered to teach (modern, conversational) Hebrew as an elective.

Enjoy your time away from the formal classroom experience but remember to practice reading Hebrew aloud for FIVE minutes every single day!

B’shalom, Sharon



Summertime Hebrew!
Keep your reading skills sharp!!
Contact Mrs. W to set up a regular meeting with her.
All appointments will take place at Beth El.
Sharon@bethelnorfolk.com

The Fall Chaggim will be here before you know it!

Get involved in planning our Family Services and Activities.

Email Sharon and let her know when you are available to get together over coffee and chocolate.

sharon@bethelnorfolk.com



**SHABBAT MORNING PROGRAMMING
FOR KIDS**

**JUNE 2017
JUNE 10TH 2017**

**JUNIOR CONGREGATION AT 10:30 IN
BARR CHAPEL**

**TORAH TWEENS AND MINI MINYAN
AT 11:00**

**THIS WILL BE THE FINAL GATHERING
BEFORE THE SUMMER TIME
RECESS!**

Beit Sefer Shalom-UHS 2.0
School Registration Forms can
be found on the Beth El
website:
www.bethelnorfolk.com

Registration packets include a
mid-week Hebrew scheduling
request form.
**BE SURE TO COMPLETE
THIS ASAP!**

Mid-week Hebrew will begin
on Monday, September 11th
and will be offered at the JCC
and at Beth El.



**PARENT
ORIENTATION**

Remember that the first day of Sunday classes for Beit Sefer Shalom-UHS 2.0 is September 10, 2017. There is a **MANDATORY** parents' orientation that morning **AND** the Red Cross will be doing a blood drive at Beth El. Please mark your calendars to ensure you will be able to participate!

News from the Sisterhood

Sisterhood Shabbat - May 6th: Sisterhood members and Friends of Sisterhood conducted Shabbat services. For those of us who have been around synagogues for some time, this demonstrated a true evolution. The days when the only honors that women were afforded were opening and closing the Ark are long gone.

For many years Sisterhoods boasted a very large and active membership of women of all ages. Just look at the many pictures on the walls of Barr Center. There were ladies bumping tushes in the kitchen for every Shabbat Kiddush and Seder, fantastical Purim Carnivals with the most tantalizing cakes for the bake sale, fashion shows, holiday care packages for our college students, corny plays written and performed by our members, the Chronicle filled with photos and ads from our membership and the community.

Now so many of our women have gone back to work outside the home, belong to the many Jewish and community organizations, and they frantically shlep children and grandchildren here and there. Their time for Sisterhood has dwindled. But despite Sisterhood's dwindling numbers, there continues to be an active "committee" of dedicated women who carry on the work that Sisterhood has done for so many years. Here are just a few our accomplishments:

- * Ensure that there is always a Kiddush lunch on Shabbat and Yom Tovs
- * Prepare and serve Shiva meals, Shabbat dinners, and many other life cycle events. You can call us to help with your events.
- * Give large sums of money to the Congregation when asked to assist with various needs.
- * Completely remodeled the upstairs kitchen. Carol Smith worked untold hours designing and supervising the changes from a deteriorating tiny kitchen space to a workable true kitchen with a multitude of storage. With the money left over, we purchased equipment such as a freezer, and various small appliances.
- * Organized and participated with neighbor Sisterhoods in events such as meals in the Sukkah and Tu B'Shevat seders
- * Provided fresh flowers on the bimah for holidays
- * In the last thirteen years, we have sent over \$144, 000 to support the Jewish Theological Seminary through our annual Torah Fund campaigns thanks to the continued efforts of Ina Leiderman and Barbara Abraham. As you know, JTS is where most of our talented clergy are educated.
- * We have a newly invigorated Gift Shop thanks to the experienced and creative hands of Marilyn Ashe and Gina Rose. Stop by for a new tallis or some holiday and gift ideas.
- * As mothers and grandmothers we know the value of extending our children's Jewish education to places where the values of mitzvah and love of Judaism are cemented. Since 2004, we have contributed to more than 200 scholarships to help our students with the cost of attending Jewish oriented summer camps. While the bulk of the funds have gone to those who attend Camp Ramah, funds are also made available for educational trips to Israel, Leadership Camps for BBYO, and more.
- * Our Annual Summer Garage Sale is faithfully organized and supervised by Nancy Kanter. Nancy and her crew spend weeks, probably months, gathering and pricing items, staging the sale, securing numerous volunteers to assist on sale days and breaking down after the event. Funds from this annual event enable Sisterhood to support the many causes described.

So where do we go from here? You should have received information about Beth El Sisterhood Redux. Please consider attending these events to learn what Sisterhood has been, what Sisterhoods can do, and what you would like for Sisterhood to become.



Get ready for the
The Annual Beth El Sisterhood
SUMMER GARAGE SALE

In early July

Bring your gently used household goods,
small furniture, clothes, toys, books, etc.

The Summer Garage Sale enables
Sisterhood to make weekly Kiddush,
support summer camp scholarships,
generously support the Torah Fund

Campaign, renovate kitchens, organize joint holiday programs with our sister synagogues,
support Beth Sholom Village and is available to cater your family life events and more.

We thank you for your support!

Contact Nancy Kanter at 497-2212 with questions or to offer assistance with the sale.



Beth El Gift Shop

has beautiful and meaningful
Judaica and Gifts

- Holidays Shabbat Bar Mitzvah Bat Mitzvah
- Wedding Engagement
- New Baby Brit Milah Baby Naming
- New Home and Hostess Gifts

Please come by and browse the lovely selection of Judaica and fine gifts
and see what is on sale.

Please support our Gift Shop. Shopping in the Beth El Gift Shop helps fund many projects
within the synagogue. Thank you for your patronage.

Men's Club News

OUR RECENT EVENTS...

Men's Club breakfast: *Sunday, May 21st* - Sponsored by Avraham Ashkenazi, the breakfast featured dynamic speaker Irv Ellenberg, manager of the Washington office of Technion, the Israel Institute of Technology. It is a public research university in Haifa, Israel. Established in 1912 under the Ottoman Empire and more than 35 years before the State of Israel, the Technion is the oldest university in the country.

NEXT UP:

Blue Yarmulke celebration: *Sunday, June 4th* - Beth El will host our local Conservative synagogues' portion of the Seaboard Region in honoring men who have contributed greatly to their club and/or synagogue. Our honoree is immediate past Men's Club president Craig Schranz. It will also feature the installation of Beth El member Alex Pomerantz as President of the Seaboard Region of the Federation of Jewish Men's Clubs.

COMING LATER

International Convention: *July 19th-23rd in D.C.* - This is as close as it will ever be. The Men's Club is encouraging its members to attend. The convention is a blast, but it will be even more special this year with such pre-convention activities as a private tour of the Pentagon by Admiral Herm Shelanski, and tours of the African American and Holocaust museums; a cantors concert; a walking Lincoln tour; and a ghost tour. Subsidies are available from the both the region and our club.

Tides game: *in August* - Chaired by Craig Schranz, our annual trek to Harbor Park will include a pre-game cookout - details to come.

TORAH FUND

All monies for the 5777 campaign have now been sent in and we would like to thank all our members who have joined us this year. YOUR Torah Fund contribution strengthens and perpetuates Conservative/Masorti Judaism throughout the world.

We are very proud to announce our newest Benefactor, Devorah Elstein. She joins thirty-four Benefactors, eleven Guardians and three Associate Patrons for this year. Although we did not make our goal for this year, we are very proud of our six new contributors, as you can see in the list below.

We look forward to sharing the NEW Torah Fund pin for 5778 in August.

Thank you again for your ongoing support!

Barbara Abraham & Ina Mirman Leiderman, Torah Fund Co-Chairs

Benefactors (\$180)

Barbara Abraham

Debra Aleck

Helen Aleck

Janice Aleck

Marilyn Ashe

Lauren Baros Barr

Randy Caplan

Hilde Deutsch

Devorah Elstein

Janice Foleck

Beverly Frieden

Barbara Gordon

Laura Gross

Gail Juren

Nancy Kanter

Kathy Kantor by Jerry Kantor

Sue Ellen Kaplan

Dr. Susan Kaplan

Mimi Karesh

Betsy Karotkin

Alicia Cohen Kraus

Joyce Kossman

Irwin Kroskin in memory of Ruthi

Jody Laibstain

Sandra Porter Leon

Carol Levitin

DeAnne Lindsey

Sheryl Lynn Makela

Judy Mitnick

Barbara Rossen

Linda Samuels

Dorothy Spitalney

Sonia Stein

Diane Werbel

Dorothy Zimmerman

Guardian (\$300)

Tami Arnowitz

Patricia Ashkenazi

Beth Hirsch Berman

Helene Grablowsky

Gina Rose

Miriam Brunn Ruberg

Deb Segaloff

Carol Stredler Smith

Helene Smith

Jill Smith

Sara Trub

Associate Patron (\$600)

Janet Arnowitz

Evelyn Hirsch

Ina Mirman Leiderman

NEW GIVERS IN BOLD PRINT

Bar/Bat Mitzvah Corner

Elizabeth Rachel Goldstein will become a Bat Mitzvah on June 3rd. She is the daughter of Laura and Keith Goldstein and sister of William and Phillip Goldstein. She is the granddaughter of Nancy and Gerald Friedman and Helene Goldstein and Edward Goldstein of blessed memory. Lizzy is a sixth grade high honor student in the Middle Years Program at Plaza Middle School. She is proud to have started the Sense B4 Sending Chapter (social media responsibility) at the school this year. She dances almost every day and loves to travel. For her Mitzvah project, Lizzy is donating baskets to JFS, St. Mary's, Ronald McDonald House and the SPCA.



Devon and Durant Parker-Ashe will celebrate their B'not Mitzvah on Saturday, June 10th. Devon is in the seventh grade at Great Neck Middle School in Virginia Beach where she is a strait A honor student. Her younger sister, Durant, is in the sixth grade at GNMS, where she is also a straight A student honor student in the Gifted Program. Both Devon and Durant are cheerleaders for their middle school as well as members of the track team. Both Devon and Durant are accomplished pianists and gymnasts and enjoy skiing, surfing, camping, swimming, tennis and golf.

Devon and Durant have been involved with many mitzvah projects in preparation for their B'not Mitzvah. They (along with older sister, Jordan) have enjoyed playing piano for the residents of Baylake Nursing home. They have also "adopted" several children each year for the Chanukah gift donation program through JFS. Devon and Durant have chosen "Spike's K-9 Fund" as their primary B'not Mitzvah charity to provide bullet proof vests for police dogs. They had the wonderful opportunity to meet Anderson Cooper, who is a champion for Spike's K-9s.

Devon and Durant are the daughters of Allison R Ashe, MD and Jeffrey M Parker. Their older sister is Jordan. Proud grandparents include Michel and Marilyn Ashe of Virginia Beach and Linda Parker of Amarillo, Texas and Jack Parker of blessed memory. They are also fortunate to have the love and support of their stepfather, Forrest E Williams, Jr. and stepmother, Anna Parker.

Devon and Durant are looking forward to this wonderful time with family, friends and the entire Beth El congregation.

Joshua Russell Makela will become a Bar Mitzvah on June 24th. Josh is the son of Sheryl-Lynn Caroff, and the younger brother of Erik Makela. Josh, a seventh grade honors student at Salem Middle School, plays saxophone and percussion in the Salem Middle School band and Rhythm Project Virginia Beach Rising Stars Steel Drum band



MILESTONES IN THE BETH EL FAMILY

Congratulations to **Adam Leiderman**, who graduated in May from Old Dominion University with a Bachelor of Science Degree in Health and Physical Education. He will be the P.E. teacher at Hebrew Academy of Tidewater for the new school year.

We are grateful for the generous contributions of those who support Beth El
by remembering and honoring their friends and loved ones.

PEARL K. ALECK LIBRARY	Julius Marcus	George & Amy Ginsburg*	Rachel Tessler	Marianne McMillin's
ENDOWMENT	Frances Bangel	Jay Woodman	Zena Herod	recognition for excellence as a
IN MEMORY OF	Paula Eisen	Ilene Putterman	IN HONOR OF	Holocaust Educator
Nancy Forman	Barry Friedman	Adele Rhodes & Ida Rines*	Rabbi Arnowitz, thank you	Sheila Drucker & Family**
Joel & Pam Kossman	& Linda Peck	BERNARD MARTIN	Rob Bernstein & Lisa Ehrich (G)	ROSE & ARMOND CAPLAN
Betty Keller	Howard & Joan Gould	MEMORIAL FUND	Rick & Janet Forman (G)	MEMORIAL FUND
Warren & Helen Aleck	Judith Katz & Family*	IN MEMORY OF	The Family of Larry Kurzer (G)	SPEEDY RECOVERY TO
Todd Maurer's mother Paula	Jay Legum*	Rachel Tessler	Rabbi Arnowitz, for his VCIC	Laurie Goldsticker
Warren & Helen Aleck*	Barbara Leibowitz & Family	Elsie Martin*	honor	Herbert & Susan Brewer*
Zelda Leon Rappaport	Bob & Ellen Meyer*	Alexander Salzberg	Mark & Brenda Kozak*	MILTON KRAMER
Warren & Helen Aleck*	Paul & Stephanie Peck*	Elsie Martin*	IN HONOR OF	SCHOLAR-IN-RESIDENCE
Shari Reidnaur's mother	Lawrence Steingold*	BEVERLY RAFAL WERBEL	Stanley Samuels' birthday	FUND
Georgia	Esther Stark	FUND TO HOUSE THE	Barbara Rosenblum	IN MEMORY OF
Warren & Helen Aleck	Martin & Trudy Waranch	HOMELESS	CANTOR DISCRETIONARY	Rachel Tessler
Rhonda Silverberg's father	Linda Kent	IN MEMORY OF	FUND	Nathan & Ilana Benson
Warren & Helen Aleck	& Gene Whiteman**	Joe Collector	IN HONOR OF	SPEEDY RECOVERY TO
Rachel Tessler	Manuel & Dorothy Wyrone	Tamra Kruger (B)	Cantor Wendi Fried, thank you	Michael Sperling
Warren & Helen Aleck**	Larry Roesen	Gene Hirschfeld	Rob Bernstein & Lisa Ehrich (G)	Nathan & Ilana Benson
SPEEDY RECOVERY TO	Arthur & Emmy Lou Kreger*	Estie Cohen	Rick & Janet Forman (G)	MINYAN FUND
Helen Aleck	Rachel Tessler	Larry Kurzer	The Family of Larry Kurzer (G)	IN MEMORY OF
Arthur & Emmy Lou Kreger*	Burt & Patsy Barr	Sam & Diane Werbel*	KIDDUSH FUND	Larry Kurzer
Dorothy Zimmerman	Paula Eisen	Rachel Tessler	IN MEMORY OF	Neil & Gina Rose*
ADA R. MICHAELS BOOK	Stanley & Marilyn Holzswig	David & Charlene Cohen	Nancy Forman	Julius Marcus
PROGRAM	Jerry & Kathy Kantor**	IN HONOR OF	Freida Goldstein	Neil & Gina Rose*
IN MEMORY OF	Barbara Leibowitz & Family	Helen & Alan Gamsey, thank	Ruth Glaser	Rachel Tessler
Nancy Forman	Mark & Brenda Kozak*	you	Rhona Peck*	Neil & Gina Rose*
Jeff & Mona Flax*	Larry & Jill Smith*	David & Ruth Kreger (B)	Larry Kurzer	SIDDUR LEV SHALEM
IN HONOR OF	Sonia Stein & Marshall	Lorraine Gering's birthday	Arthur & Helene Rosenfeld	IN MEMORY OF
Barbara Rosenblum on	Bonnie***	Barbara Rosenblum	Julius Marcus	Gert & Aaron Behrman &
Mother's Day	Martin & Trudy Waranch	Carmen & Luis Guardia,	Rhona Peck*	Regina & Henry Schloss
The Guardia Family (B)	IN HONOR OF	happy Easter	JAY BARR ART FUND	Ben & Sharon Schloss
Barbara Rosenblum's new home	Michael Barney's special	Barbara Rosenblum	IN MEMORY OF	
Stanley & Linda Samuels*	birthday	Sharon & Ben Schloss'	Arven Aronin	
TEMPLE FUND	George & Amy Ginsburg*	anniversary	Ellen Shapiro	
IN MEMORY OF	Michael & Phyllis Sperling	Bert & Joyce Legum*	Larry Kurzer	
Joe Collector	Judy Dobrinsky's birthday	SPEEDY RECOVERY TO	Clay Barr*	
Herbert & Carolyn Bangel	Mannie & Judy Smith (B)	Michael Sperling	IN HONOR OF	
Doris Friedman	Larry Dobrinsky's birthday	David & Charlene Cohen	Ellen Liebman's special	
Ron & Cindy Kramer (S)	Alan & Norma Jaffe**	Kevin Toner	birthday	
Leone Dorf	Mannie & Judy Smith (B)	Barbara Rosenblum	Ellen Shapiro	
Frances Bangel**	Ethel-Raye Greenspan's special	JEFFREY KESSER	SHARON SPITALNEY	
Al Fishman	birthday	SCHOLARSHIP FUND	SCHOLARSHIP FUND	
Frances Bangel	Bert & Joyce Legum*	IN HONOR OF	IN MEMORY OF	
Nancy Forman	Ross & Anne Legum (B)	Lawrence Kesser's birthday	Larry Kurzer	
Herbert & Carolyn Bangel (B)	Sonny & Betty Lou Legum's	Barbara Rosenblum	Jay & Marsha Woodman*	
Mark Barr (B)	birthdays	SUNDAY SCHOOL FUND	Julius Marcus	
Arnold & Miriam Hoffman	Dorothy Zimmerman*	IN MEMORY OF	Meyer & Dee Dee Chovitz	
Tom & Sharon Lira*	Ina & Marty Leiderman, thank	Frances Feldman	IN HONOR OF	
Stanley & Carole Sacks	you!	Norman Soroko	Dorothy & Ron Spitalney's	
Lenny Goodman	Bill & Ida Kittner	David Finder	new home	
Ellen Miller*	Linda Samuels' birthday	Freida Goldstein	Barbara Rosenblum	
Tillie Goodman	Mannie & Judy Smith*	Nancy Forman	Stanley & Linda Samuels*	
Ellen Miller*	Stanley Samuels' birthday	Wayne Goodman	Mannie & Judy Smith*	
Phyllis Kaplan	Mannie & Judy Smith*	Larry Kurzer	ARTHUR & HANNA	
Joan Green (G)	Larry & Natalie Saunders' new	Norman Soroko*	KONIKOFF MEMORIAL	
Kerem Shalom Board of	home	Alan & Jody Wagner*	FUND	
Directors & Staff (G)	Arthur & Emmy Lou Kreger*	Rachel Tessler	IN MEMORY OF	
Larry Kurzer	Hubert Shapiro's birthday	Norman Soroko*	Rachel Tessler	
Herbert & Carolyn Bangel (B)	Arthur & Emmy Lou Kreger*	RABBI ARNOWITZ	Albert & Wendy Konikoff*	
Burt & Patsy Barr	Mannie & Judy Smith*	DISCRETIONARY FUND	MELVIN ZIMM	
Bernie	SPEEDY RECOVERY TO	IN MEMORY OF	HOLOCAUST EDUCATION	
& Helene Grablowsky**	Helen Aleck	Nancy Forman	MEMORIAL FUND	
Jerry & Kathy Kantor*	Barry Friedman	Arnold Slone & Paula Alperin*	IN HONOR OF	
The Merkle Family	& Linda Peck	William Hirt & Ray Hirt	Amy Lindgren's recognition	
& Frances Orloff	Stanley & Linda Samuels	Renee Brewer (B)	for excellence as a Holocaust	
Larry Kurzer	Laurie Goldsticker	Larry Kurzer	Educator	
Herbert & Carolyn Bangel (B)	Martin & Trudy Waranch	Charles & Betty Lou Legum*	Sheila Drucker & Family**	
Burt & Patsy Barr	Alexander Salzberg	Elaine Ostrower (B)		
Bernie	Bert & Joyce Legum	Julius Marcus		
& Helene Grablowsky**	Michael Sperling	Elaine Ostrower (B)		

Condolences to

Friends and
family of
Joseph Collector
of blessed
memory.

REMEMBRANCE DONATIONS

* = Chai = \$18

** = Double Chai = \$36

B = Bronze = \$19 - \$49

S = Silver = \$50 - \$99

G = Gold = \$100 or more

June and July Yahrzeits

*We record the sacred memory of the following departed members
of the families of our congregation on the occasion of yahrzeit.
The names of our beloved departed are read from the pulpit at each evening minyan.*

<u>JUNE 1</u> Sarah Berlin Louis Chapel Michael Karp Joseph Leibowitz Shirley Levin Maxwell Rosen Leon Salzberg Howard Werner	<u>JUNE 11</u> Sara Amelson Gabiella Becker David Davis Miriam Friedman Maurice Jacobson Bertha Kramer Albert Laderberg Audrey Laskin Rose Lipson Minnie Salasky Stanley Saunders Joel Shapiro Samuel Sonkin Fannie Swersky	<u>JUNE 20</u> Ruth Caplan Bertha Kan Mary Krukin <u>JUNE 21</u> Samuel Blum Samuel Coleman Katie Frank David Friedman Goodman Higgin Rae Hodes Annie Horwitz Richard Laderberg B.D. Laderberg Paul Swartz Ben Wilgard	<u>JULY 1</u> Abraham Brownstein Abraham Feldman Max Field Abraham Levy Jerome Levy Susan MacMillan Lorraine Melworth Sadye Rafal Harry Schapiro Morris Sigal	<u>JULY 9</u> Willie Chernitzer Lena Cohen Hillard Friedman Mollie Levin Elizabeth Myers Edith Samet Edwin Siegel <u>JULY 10</u> Barnett Amelson Louis Banks Zelig Chenman Charles Cohen Meyer Feldman Rashie Flax Reatha Friedman Bessie Leon William Peck Fritz Philipp Sara Prost Bertha Reuben Harry Shea Jake Wyron	<u>JULY 17</u> Betty Arogeti Jay Barr Dorothy Berman Freida Birshten Mary Dratler Perry Frank David Jacobson Sara Shipowitz George Topper Burnette Zedd <u>JULY 18</u> Victor Branfield Kurt Hirsch Ben Juren Ellis Korel Harold Merkle Frank Rosen Lottie Rosenblatt	<u>JULY 26</u> Lena Block David Goodman Morris Hamburg Max Leon Emanuel Michaels Isabel Rosenblatt Nathan Rudlin Esther Shea Rhona Weinstein <u>JULY 27</u> Frank Aks Paul Banks Chaya Grossberg Fannie Levenstein Sadie Meyer Morris Peltz Louis Pollack Myer Pudolsky Anna Swersky Dora Waranch
<u>JUNE 2</u> Leonard Berman Gussie Cohen Samuel Fried Sybil Friedberg William Levitin Albert Miller Hannah Orkin Doris Posner Lillie Rosenbaum Beverly Sachs	<u>JUNE 12</u> Alice Blumenson Joel Friedberg Louis Ginsburg Lena Halpern Simon Harris David Leavitt Beckie Richter Rose Rosenberg Harry Swersky	<u>JUNE 22</u> Sarah Cooper Martin Kaplan Irvin Nelson <u>JUNE 23</u> Rebecca Goodman Jean Greenstein Alan Hirsch Ann Max Gayle Newmark Leah Pekarsky	<u>JULY 2</u> Rose Asbell Florence Berlin Rae Frieden Annette Kaplan Rebecca Marcus Harry Mendelsohn Rebecca Nelson Harry Moutin Shirley Smith Rachel Steele Burnley Tabakin	<u>JULY 11</u> Henry Barr Ida Braun George Forman Irving Gould Elise Hofheimer Cecelia Minskoff Sylvia Moskowitz Leon Salzberg Mildred Steinberg	<u>JULY 19</u> Frank Banks Olga Snyder Julius Ferstman Melville Hirsch Rose Tonelson <u>JULY 20</u> Morton Janney Harry Kaplan Rose Levin Selma Saunders	<u>JULY 28</u> Louis Berman Leonard Cobb Rachel Cohen Florence Cohen Becky Hillman Norma Steingold
<u>JUNE 3</u> Sarah Glasser Morris Hecht Lori Kaplan William Kroskin Michael Newmark Sarah Rosenbloom Bernard Samuels Philip Ungar	<u>JUNE 13</u> Gary Drucker Louis Kaplan Anna Laderberg Charles Leavitt Jacob Samuels Tilton Wyron Helen Young Raymond Zedd	<u>JUNE 24</u> Lynn Chapel Franklin Cohen Ida Crockin Bessie Lyons David Sneider	<u>JULY 3</u> Helen Abrams Harry Axelrod Henry Cohn Irving Glickman Yetta Hecht Reesa Heifler Hyman Krause Eleanor Kruger Edythe Laskowitz Donald Levy Alan Mirman Zena Stein Archie Tonelson Esther Ungar Louis Valenstein	<u>JULY 11</u> Gertrude Behrman Anna Cohn M.B. Finkelstein Etta Goldblatt Gertrude Herzberg Mark Holzweig Isaac Klaff Abraham Mendelson Esther Mervis Robert Richardson Benjamin Rosen Ida Schneider	<u>JULY 29</u> Joseph Block Fred Burg Barry Fine David Finestone Joseph Friedberg Esther Miller Bernice Salber	<u>JULY 28</u> Louis Berman Leonard Cobb Rachel Cohen Florence Cohen Becky Hillman Norma Steingold
<u>JUNE 4</u> Edward Beck Leah Feldman Joseph Ginsburg Lena Herzberg Sarah Japha Yetta Levy Jack Mitnick Clarice Nachman Sara Sachs James Schwartz	<u>JUNE 14</u> Theodore Amelson Rose Asher Bessie Deitch Bessie Dozoretz Ethel Finestone Myer Geffen Michael Gottlieb Edwin Kanter Samuel Kline Dave Levin Eva Mallenbaum Pincus Paul Alan Permutt	<u>JUNE 25</u> Hilda Balsam David Beder Jonathan Edelblute Jennie Fass Douglas Goff Stanley Mirman Samuel Schilansky Harry Sterling	<u>JULY 4</u> Jack Bodner Rose Kaufman Jean Knopping Samuel Lipson William Miller Anne Petock David Saks Joseph Schneider	<u>JULY 12</u> Gertrude Behrman Anna Cohn M.B. Finkelstein Etta Goldblatt Gertrude Herzberg Mark Holzweig Isaac Klaff Abraham Mendelson Esther Mervis Robert Richardson Benjamin Rosen Ida Schneider	<u>JULY 29</u> Joseph Block Fred Burg Barry Fine David Finestone Joseph Friedberg Esther Miller Bernice Salber	<u>JULY 28</u> Louis Berman Leonard Cobb Rachel Cohen Florence Cohen Becky Hillman Norma Steingold
<u>JUNE 5</u> Rena Bartley Helen Bumin William Fink Bertha Glaberman Samuel Keller Rose Rafelman Abraham Rines Stuart Schoenhaut Alex Segal Abraham Tavss	<u>JUNE 15</u> Helen Dworsky Joseph Jaffe Joseph Kellman Yudus Levy Bertha Siegel	<u>JUNE 26</u> Hyman Batleman Philip Belkov Elaine Brown Hannah Chandgie Jeanette Howard Harris Klaff Abraham Robins Stanley Weigen	<u>JULY 5</u> Alan Becker Julius Block Samson Froehlich Herbert Waller	<u>JULY 12</u> Helene Froehlich Phyllis Gilbert Rita Kluff Bessie Leon Jutta Loewenbach Dora Meltzer Hyman Myers Beulah Swartz	<u>JULY 29</u> Joseph Block Fred Burg Barry Fine David Finestone Joseph Friedberg Esther Miller Bernice Salber	<u>JULY 28</u> Louis Berman Leonard Cobb Rachel Cohen Florence Cohen Becky Hillman Norma Steingold
<u>JUNE 6</u> Martha Friedberg Julius Rosenfeld Tillie Schein	<u>JUNE 15</u> Helen Dworsky Joseph Jaffe Joseph Kellman Yudus Levy Bertha Siegel	<u>JUNE 26</u> Hyman Batleman Philip Belkov Elaine Brown Hannah Chandgie Jeanette Howard Harris Klaff Abraham Robins Stanley Weigen	<u>JULY 5</u> Alan Becker Julius Block Samson Froehlich Herbert Waller	<u>JULY 12</u> Helene Froehlich Phyllis Gilbert Rita Kluff Bessie Leon Jutta Loewenbach Dora Meltzer Hyman Myers Beulah Swartz	<u>JULY 29</u> Joseph Block Fred Burg Barry Fine David Finestone Joseph Friedberg Esther Miller Bernice Salber	<u>JULY 28</u> Louis Berman Leonard Cobb Rachel Cohen Florence Cohen Becky Hillman Norma Steingold
<u>JUNE 7</u> Jennie Aleck Fannie Epstein Harris Fox Edith Green Leonard Kessler Esther Morris Nathan Straus	<u>JUNE 16</u> Phillip Barr Rachel Rauch Robin Siegel	<u>JUNE 27</u> Fred Buns Liba Rudlin	<u>JULY 6</u> Leopold Brown Benjamin Cohen Max Comess Sara Comess Harry Kramer Lee Myers Lily Solov Bella Stepper	<u>JULY 13</u> Helene Froehlich Phyllis Gilbert Rita Kluff Bessie Leon Jutta Loewenbach Dora Meltzer Hyman Myers Beulah Swartz	<u>JULY 29</u> Joseph Block Fred Burg Barry Fine David Finestone Joseph Friedberg Esther Miller Bernice Salber	<u>JULY 28</u> Louis Berman Leonard Cobb Rachel Cohen Florence Cohen Becky Hillman Norma Steingold
<u>JUNE 8</u> Kate Goldstein David Lajbstein Joseph Marcus Freda Soroko	<u>JUNE 17</u> Ruth Barr Mayer Birshten Frieda Amelson Harold Goldman	<u>JUNE 28</u> Roslyn Albert Sadie Elson Etta Lind Mary Silverstein	<u>JULY 7</u> Beverly Brager Sarah Cohen Morris Goldberg Isaac January Emery Korel Amelia Myerson Samuel Sinberg Esther Wagenheim	<u>JULY 13</u> Helene Froehlich Phyllis Gilbert Rita Kluff Bessie Leon Jutta Loewenbach Dora Meltzer Hyman Myers Beulah Swartz	<u>JULY 29</u> Joseph Block Fred Burg Barry Fine David Finestone Joseph Friedberg Esther Miller Bernice Salber	<u>JULY 28</u> Louis Berman Leonard Cobb Rachel Cohen Florence Cohen Becky Hillman Norma Steingold
<u>JUNE 9</u> Minnie Abramson Leah Aks Celia Dobrinsky Joseph Kroll Edwin Lewis Eva Sandler Max Turer	<u>JUNE 18</u> Pearl Abeloff Alex Berlin Harry Garson Morris Goodman Norman Kozak Ruth Schoener Melvin Ticatch Laura Waiss	<u>JUNE 29</u> Annie Adelston Hymie Cohen Anna Gross Dave Kaplan Maurice Miller Joseph Patish Marsha Rosenblatt Sol Saunders Irwin Stavim Martha Weissberg	<u>JULY 8</u> Rachel Block Laura Ehrlich Oscar Hamburg Jeffrey Kesser Henry Kroskin Mariflyne Rafal	<u>JULY 14</u> Sylvia Gould Rebecca Katz Beatrice Kovich Eva Kramer Rachel Perlman Bertha Rosen Goldie Schwartz	<u>JULY 29</u> Joseph Block Fred Burg Barry Fine David Finestone Joseph Friedberg Esther Miller Bernice Salber	<u>JULY 28</u> Louis Berman Leonard Cobb Rachel Cohen Florence Cohen Becky Hillman Norma Steingold
<u>JUNE 10</u> Morris Bank Thomas Friedman Coleman Gordon Hill Haber Sarah Harris Sarah Hershman Hanna Izenstein Saralee Kramer Esther Samuels	<u>JUNE 19</u> Lillian Friedman Ada Harris Samuel Jelaza Abraham Legum Alvin Walter	<u>JUNE 30</u> Isaac Glazer Meyer Goldberg Maurice Josephberg Sol Kreger Ralph Rossen Walter Waiss	<u>JULY 8</u> Rachel Block Laura Ehrlich Oscar Hamburg Jeffrey Kesser Henry Kroskin Mariflyne Rafal	<u>JULY 14</u> Sylvia Gould Rebecca Katz Beatrice Kovich Eva Kramer Rachel Perlman Bertha Rosen Goldie Schwartz	<u>JULY 29</u> Joseph Block Fred Burg Barry Fine David Finestone Joseph Friedberg Esther Miller Bernice Salber	<u>JULY 28</u> Louis Berman Leonard Cobb Rachel Cohen Florence Cohen Becky Hillman Norma Steingold



422 Shirley Avenue, Norfolk, VA 23517

Non-Profit Org.
U.S. Postage
PAID
Norfolk, VA
Permit No. 1860

OR CURRENT OCCUPANT

Did you know
you can get your
bulletin on the Web?
bethelnorfolk.com

SAVE THE DATE!

Schmooze at the Shore

Sunday, August 27th

First Landing State Park (on the bay)

2500 Shore Drive
Virginia Beach, VA 23451

The Gazebo

757-412-2300

Come and have some fun in the sun! Catch some rays with your Beth El Family!

3:00 pm: Hang out on the beach (Feel free to come earlier and we'll catch up with you.) Look for the balloons to find Beth El folks.

4:30 - 5:30 pm: Grilled hamburgers and hot dogs courtesy of Chef Rabbi Arnowitz.

6:00 pm: Daven Mincha/Maariv on the dunes.

***Please bring a cover-up or shirt to wear if you plan to stay for services.**

All YOU need is your beach chair, towel, sunscreen and appetite!



RSVP by calling the
Beth El office at
757-625-7821
by August 23rd



Check the Beth El website
or watch your email for
cancellation notice due to
inclement weather.

Parking on site: \$5.00