



Congregation Beth El Bulletin



Tevet - Shevat 5778
January 2018

17th Annual Ben Gordon Family Bingo Night

Saturday
February 10th
7:30 pm

Mark your calendars and join us for our 17th annual Bingo fundraiser. We'll have the usual selection of outstanding prizes, hot dogs and popcorn for the Men's Club's biggest fundraiser that helps to pay for the synagogue's educational needs and camp scholarships.

RSVP to the office at 625-7821 NOW
so that we know how much food to purchase.

“Living Up to our Values”

At the beginning of this year I wrote about how wonderful it is to be hosting the Park Place Elementary School. Not only is it wonderful to have a renter during the week when we do not use the school space, but I also hoped the school would give us a natural forum to practice *Hachnasat Orchim* (Hospitality) and *Tzedakah*. I am so happy to report that that has indeed come to fruition. Between the Thanksgiving meals we helped facilitate for the families who may otherwise have gone without and the holiday party our Sisterhood hosted for them on Friday, December 15th (including a Christmas present for every child), it has been wonderful to see how the Beth El family is stepping up to live our values through the school that now calls our premises home.

There are so many opportunities, like the team from the BeARReader program who are reading with the kids and members coming in to teach on various topics – thank you to all of you who have risen to the call and I hope even more of us will be getting involved going forward.

Of course, there are lots of Jewish values and lots of ways to express them. As we have reached out to the Park Place School, we have also continued to support our local Jewish tzedakah organizations, like the Milk and Honey Food Pantry at JFS, and the greater Jewish community, including our commitment to support Israel and Her people. We also share a value of building bridges to and alliances with other communities, and so I want to personally invite you to the Hands United Building Bridges (HUBB) programs happening from January 7th – January 15th. This week of programming in honor of Martin Luther King, Jr. week is all about Building Bridges and better understanding our neighbors. I especially want to highlight two events:



Rabbi Jeffrey M. Arnowitz

Hands United Building Bridges
Celebrating Dr. Martin Luther King, Jr.
 City on A Hill Forum:
 An Interfaith Dialogue on Race & Politics

JOIN US FOR THE CONVERSATION

Panelists will include:
 Rabbi (Dr) Michael Panitz, Temple Israel
 Bishop (Dr) B. Courtney McBath, Calvary Revival Church
 Imam Rachid Khould, Crescent Community Center
 Dr. Tahani R Amer, Muslim

Sunday, January 7, 2018 | 5pm –7pm

Congregation Beth El Synagogue
 422 Shirley Ave; Norfolk, VA 23517

Free Admission | hor d'oeuvres will be served | Please RSVP

www.theurcnorfolk.com/events/forum



25TH ANNUAL
 VIRGINIA FESTIVAL OF JEWISH FILM
 IN HONOR OF MARTIN LUTHER KING, JR DAY

MARSHALL
GRADED PG-13 (13+)

**LIVE HARD.
 FIGHT HARDER.**

IN PARTNERSHIP
 WITH COMMUNITY
 RELATIONS COUNCIL OF
 THE UNITED JEWISH
 FEDERATION OF Tidewater &
 HANDS UNITED BUILDING
 BRIDGES (HUBB)
 DISCUSSION TO FOLLOW

FREE

MONDAY
JANUARY 15
6:00PM
 TCC ROPER
 PERFORMING
 ARTS CENTER
 340 GRANBY ST
NORFOLK

"THE ONLY WAY THROUGH
 A BIGOT'S DOOR IS TO BREAK
 IT DOWN!" - MARSHALL

FOR MORE INFORMATION OR TO RSVP, VISIT
JEWISHVA.ORG/MARSHALL OR CALL 321.2304.

To check out all of the events that week, visit the Building Bridges Weekend Website at <https://handsunitedbuildingbridges.weebly.com>

Also, in hopes that you will come to the Forum at Beth El on January 7th, we will have no Torah on Tap in January, but join us on Tuesday, February 6th for the ever-popular **Torah on Tap at the 58 Deli**.

A Note from Cantor Wendi

To my dear Beth El family,

On the 27th of this month, we will celebrate my favorite Shabbat of the year, shabbat Shira, meaning Shabbat of Song. Traditionally, the name is referring to one song in particular; that of Shirat Hayam, the song of the sea. This song was said to have been sung by Miriam and the Israelite women after they crossed the red sea. It is chanted on this Shabbat with a special trope, or tune, and commemorates our escape from the Egyptian people and celebrates our profound and difficult, yet ever evolving and loving relationship with God. This prayer is also found in our daily liturgy during the Shacharit service. So, we observe this Shabbat of song by chanting Shirat Hayam and in many congregations the Shabbat Shira theme of the weekend is expanded to include other kinds of music and entertainment as well.



This upcoming Shabbat Shira will be a very special one for us here at Beth El.

The program will be called, *Shul Lab*. With the help of our community singers of all ages, we will be exploring different kinds of prayer that will help get us deeper into our davening experience.

This is NOT a performance or concert! In putting this service together and choosing which prayers to include, I put much emphasis on finding a balance between the known and the unknown. There is so much music out there and so much I want to introduce you to! So, with that in mind, there will be tunes that you know and there will also be some that you are not familiar with. However, everyone is encouraged to participate throughout the entire “service” at all times! The community singers will be there to ENHANCE with their harmonies and also to help with the introduction of newer tunes. They will be there as guides and support for those melodies that you are less familiar with. If you do not know the tune, please try to catch on! I will provide sheet music and words in transliteration when there are words so that everyone should feel like they can be involved equally in the experience. I do hope that you will all come and join us for this musical celebration of Shabbat!

We will also be making a connection that day to Tu B’Shevat, the birthday of the trees. Tu B’Shevat always occurs on or a couple of days after Shabbat Shira. There are a few possible connections that have been made as to why these two days are closely intertwined in the calendar. Some say it is because of the Haftarah that was selected for this day. This text is about Devorah, the judge and prophetess who sat under a date palm and passed down judgement and justice. Some say it was selected to be chanted on Shabbat Shira because Miriam and Deborah both sang songs in celebration of God’s miracles. Devorah’s date palm was her throne and allowed her a safe place from which to lead and help her people.

Here I offer my own midrash between the two: Within the Tu B’shevat seder, we talk about three categories of fruits that we can find:

First there are the **Fruits with insides we can eat and outsides that we can't eat**. Some examples are bananas, pomegranates, almonds, and oranges.

Next are the **Fruits with outsides we can eat and pits inside, which we can't eat**. Some examples are olives, dates, cherries, and avocados.

Finally, there are the **Fruits that we can eat inside and out**. Some examples are grapes, figs, and carobs.

In an article on the website www.ritualwell.org, these groups of fruit are compared to different types of people or different moods we might experience. “Some people, for example, have a hard, tough shell but are soft-hearted; other people can seem to be very easy-going but they have a lot of inner resolve and conviction.”

For me, the connection lies within different kinds of music. There is music that conveys meaning with a hum or a yai dai, what we call a niggun, whose message lies within the tune and allows time for self reflection. Then there is the kind of music for which the melody is there, but it takes a backseat to the words which express and force us outside ourselves to share that deeper meaning, and finally is the type that combine the two...music in which the melody and the words are inextricably tied together to make up an entire spiritual experience...body, heart, mind, and soul.

On this Shabbat Shira, January 27th, 2018, I hope you will each come and allow yourselves to experience all these types of Shabbat music...see which one expresses the liturgy best for you...which type most helps you convey your feelings and your relationship with God and your community around you.

Hope to see you all there!!

B’shira uv’zimra, Cantor Wendi

Beth El **to house the homeless - N.E.S.T.** **January 24th - 31st**

When we open our house to those without shelter, not only are we helping them but we are also allowing our own light to shine forth. The NEST program is Beth El's way of opening our home to the poor and sharing our bread with the hungry. It has long been our premier social action project – the program that allows our “light to burst through like the dawn.”

This year, Congregation Beth El will again open its doors to the homeless of our community for a week beginning Wednesday, January 24th. For the twenty-second year, Beth El will join churches and area synagogues in hosting and feeding the homeless throughout the winter months as part of the efforts of NEST (Norfolk Emergency Shelter Team).

In the past, Beth El has depended on the commitment of its members for this important mitzvah. Volunteers are needed again to register guests, prepare and serve meals and to be available during the night and early morning hours to monitor the program. Contributions are greatly needed to fund this program. Those who can are encouraged to send a check to Beth El with the notation that is for the homeless program.

If you would like to donate to this program or volunteer, please see the form below. We would like to request warm hats and gloves or packages of white crew socks and hotel/travel size toiletries.

I WANT TO HELP THE HOMELESS

Listed below are the dates and times that we need volunteers. **Please choose a time that you would like to volunteer and call the Beth El office at 625-7821.** If you would like to make a donation to the Homeless Fund, please mail your check to:

Congregation Beth El
422 Shirley Avenue
Norfolk, VA 23517
with “Homeless” in the memo section

Evening Shift
6:30 pm - 10:00 pm

- Wednesday, January 24
- Thursday, January 25
- Saturday, January 27
- Sunday, January 28
- Monday, January 29
- Tuesday, January 30

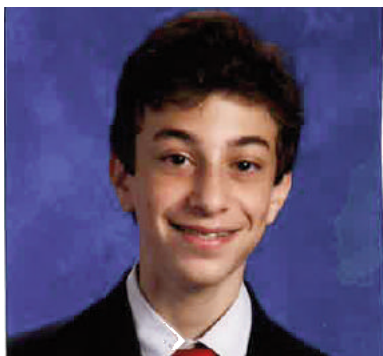
Late Shift
10:00 pm - 5:30 am

- Wednesday, January 24
- Thursday, January 25
- Saturday, January 27
- Sunday, January 28
- Monday, January 29
- Tuesday, January 30

Morning Shift
5:30 am - 7:30 am

- Thursday, January 25
- Friday, January 26
- Sunday, January 28
- Monday, January 29
- Tuesday, January 30
- Wednesday, January 31

Bar Mitzvah Corner



Micah Baum will celebrate his bar mitzvah on January 13th. Micah is the son of Elena and Gary Baum and the brother of Jaden and Asher Baum and the grandson of Clay and the late Jay Barr and Shirley and the late Braham Baum. Micah is a high honor roll student in the 7th grade at Norfolk Academy where he plays clarinet in the middle school band, played on the Bulldog soccer team, and has been involved extensively in theater. His hobbies include tennis, playing the piano and spending way too much time checking the results of his fantasy football team.

LUNCH & LEARN

Wednesdays

January 3rd, 10th, & 17th

No Lunch & Learn on January 24th or 31st

Beth El Lunch and Learn is a vibrant group of fressers (eaters) and learners who come together weekly for good food and stand alone discussions led by Rabbi Arnowitz, Rabbi Ruberg, and Cantor Wendi. We meet every Wednesday from noon to 1:30 pm.

Cost: \$5.00 per person

Rabbi Ruberg's Ethics Class based on the rabbinic wisdom book *Pirkei Avot* will begin Wednesday, January 3rd at 11 am in the library. This is the class's third year, and new students are welcome to join the returning students for the study and discussion of Chapter 3.

January sessions will meet on the 3rd and 10th of the month from 11:00 until 12 noon.

CONGRATULATIONS

Lindsey and Rachel Anderson reached their goal and received their CHAI yad!! At 10 years old, Lindsey Anderson is the youngest member of Beth El ever to have reached this goal! When asked how she was feeling, she said, "Reading from the Torah makes me feel good. When I am reading in front of the congregation, it makes me feel like I am in the spotlight. I love being surrounded by people who care about me and are very proud of me. One of the best moments for me is when I get a bear hug from Cantor Wendi after I read."



Her mother, Rachel, was thrilled to be part of her daughter's journey and though nervous at first she was happy to learn the mitzvah of reading Torah. About her experience she said, "When I start to read Torah, I feel nervous and a bit scared. When I finish reading, I feel proud and accomplished. What makes me happy with this journey to 18, is that Lindsey and I get to experience this milestone together. Eric, Courtney, Lindsey, and Cantor Wendi have been my biggest cheerleaders and a constant source of support and encouragement. We have made a wonderful memory we get to carry with us forever."

We are so proud of the Andersons! They are great role models for everyone in our community! They have assured us that they will continue on with their reading to the next milestone of 36 and are looking forward to their next reading already! Come join them and read Torah! Age is no issue! We look forward to having more people join the Yad Squad very soon!

**There will be NO
Torah on Tap
in January but join us on Tuesday,
February 6th for the ever-popular
Torah on Tap at The 58 Deli**

Events

Mimosas, Manicures and Mitzvahs – Our next event will be a fun time while getting your mani/pedi on in January. It’s a time to bond and spend time with other Beth El women. We will have refreshments while everyone gets a little pampering in the middle of winter. And as an added bonus, we will be doing a mitzvah for the community. Be on the lookout in the near future for additional information in the weekly bulletin.

Sisterhood Shabbat - SAVE THE DATE - APRIL 14, 2018 - Calling all of our Sisterhood members to take part in Sisterhood Shabbat, which will be April 14, 2018. We need Torah readers, Torah carriers, service and prayer leaders, English readers and ark openers. So there is something for everyone. If you would like to take part, please call or email Ina Leiderman. We especially need those women who know how to read Torah or who would like to learn how to read Torah. Cantor Wendi is happy to help everyone learn this important skill or learn to do any part of the service. Waiting to hear from you! Call Ina at 757-463-9043 or email her at mleider557@aol.com to volunteer.

Sisterhood Catering looking for help for the HUBB event January 7th – You don’t need to know how to cook, you just need to know how to take direction. To help, we need you to take the food handler test for the City of Norfolk <https://www.statefoodsafety.com/food-handler/virginia/city-of-norfolk>. From others who have done it, they say “It is an easy test to take and we have a fun time in the kitchen”. If you need more information contact Carol Smith at carolss629@gmail.com

Membership

Sisterhood monthly fun fact - Did you know that Sisterhood provides scholarships for Jewish Camps?

We are a diverse inter-generational group of women who enjoy a wide variety of activities, from social events to fundraising to volunteering as members of Beth El, as well as supporting the Jewish community in Hampton Roads. Our focus is building Sisterhood among the women of Beth El and having a lot of fun. If you are interested in joining us or getting more information about who we are and what we do, please feel free to contact:

Shelley Frazier – 3fraziers@verizon.net

Carol Smith – carolss629@gmail.com

Sharon Debb – sdebb030609@gmail.com

Ashley Zittrain – aaszittrain@yahoo.com

Dues – Sisterhood dues are \$35 a year and due into the office no later than December 31st each year. When mailing them into the office, please make sure they are designated for Sisterhood dues.

BETH EL GIFT SHOP



UP TO 50% OFF MANY ITEMS

Including mezuzot, talit, menorahs, jewelry, kiddush cups and Judaica prints.

Thank you for your support of the Gft Shop.
All proceeds benefit projects at Beth El.

SUMMER SCHOLARSHIPS

WHERE WILL YOUR CHILDREN BE THIS SUMMER?

Many opportunities exist for Beth El students to participate in Jewish enrichment programs during the summer, and the Scholarship Committee is looking forward to providing funds for Beth El youngsters to attend these wonderful activities. Information on programs, such as Camp Ramah, USY on Wheels, and trips to Israel are available through the synagogue and the Federation.

Beth El's Men's Club and Sisterhood provide scholarship subsidies. In addition, the Cherin and Polis Family Trusts, and the Sharon Spitalney Scholarship Fund were established specifically for this purpose. Funds are available from these sources for the children of members in good standing (i.e., those whose financial obligations to Beth El are current).

Apply for scholarship funds by submitting the following application by March 15, 2018, to:

Beth El Scholarship Committee
c/o Dorothy Spitalney
2421 Ocean Shore Crescent #402
Virginia Beach, VA 23451

Child's name: _____ Age: _____

Address: _____

Phone number(s): _____

Parents' names: _____

Name and sponsor of activity: _____

Cost of activity: _____ Length of activity _____

Other scholarship funds available to the applicant: _____

Celebrating Judaism Through the Arts

Celebrate Tu B'shevat

January 31, 2018

At Pinot's Palette

21st Street, Norfolk

6:30 pm

\$25

Includes wine, refreshments, painting trees (all materials and instruction).

Bring your family tree to add to your painting

RSVP to the Beth El office at 625-7821



The Art of Healing

Guest speaker Israela Meyerstein,

Published author, therapist, cancer survivor

Sunday, February 4, 2018

No charge

10:30 am -12:00 pm

Champagne brunch at Beth El

12:30 pm -1:30 pm

Additional workshop for professional and lay caregivers

RSVP to the office at 757-625-7821



Please encourage your friends to join you for these programs. All are welcome regardless of Beth El membership.

Celebrating Judaism Through the Arts is made possible by grants from the Tidewater Jewish Foundation and the United Jewish Federation of Tidewater.

MEN'S CLUB NEWS

COMING EVENTS:

Ben Gordon Family Bingo Night: *(co-chaired by Mark Kozak and Norman Soroko)* February 10th in Beth El's Myers Hall. Men's Club board members are already busily gathering sponsors and prizes for our biggest fundraiser of the year. Mark your calendars now for this wildly popular family event that is typically a sellout. As always it will feature such bingo prizes as hotel accommodations, large screen TVs and restaurant coupons, plus door prizes, a 50/50 raffle and the night ending \$500 blackout game.

NEST: *(co-chaired by Alex Pomerantz)* January 24th-31st, in Beth El's Barr Hall. No, this is not officially a Men's Club event, but Alex Pomerantz is president of the Men's Club Seaboard Region and deserves all of our support in Beth El's annual endeavor to house Norfolk's homeless. Contact the office about signing up for shifts of breakfast, dinner and overnight.

Another speaker: *A breakfast speaker and other programming to be announced.*

Blue Yarmulke: *April 15, 2018, at Temple Israel*

TORAH FUND

As we begin our secular New Year 2018, we are halfway through our 5778 Torah Fund campaign. We have contacted almost all our past Benefactors and Guardians but feel free to let us know you want to recommit. To become a Benefactor (\$180), Guardian (\$300), Associate Patron (\$600) or Scholarship Patron (\$2500), please call one of us to make your pledge. You may pay in one lump sum, with payments throughout the year or even put it on your VISA, MASTERCARD, DISCOVER or AMERICAN EXPRESS (so you can earn points as you contribute to a wonderful cause!) You have until May 15, 2018 to fulfill your pledge. Please know we are ALWAYS happy to take a donation in ANY amount. Everything helps us reach our goal and of course helps the JTS.

Congregation Beth El has always been one of the leaders in Women's League and it is because of all of our generous supporters! Please join us to make this the best year ever.

Barbara Abraham and Ina Mirman Leiderman
Torah Fund Co-Chairs

We are grateful for the generous contributions of those who support Beth El

by remembering and honoring their friends and loved ones.

PEARL K. ALECK
LIBRARY ENDOWMENT
IN MEMORY OF

Robert "Buddy" Bagley

Warren & Helen Aleck

Calvin Breit

Joel & Pam Kossman

Ramon Cohen

Warren & Helen Aleck*

ADA R. MICHAELS

BOOK PROGRAM

IN MEMORY OF

Michael-Manny Goldman

The Michaels & Levys (S)

TEMPLE FUND

IN MEMORY OF

Gayle Bennett

Iris Ruden*

Alonzo Cobb, Sr.

Alonzo Cobb, Jr.*

Ramon Cohen

Jeffrey & Heather Cohen (B)

Julian & Tessie Guterman (B)

Arnold & Miriam Hoffman

Jerry & Kathy Kantor*

Joel & Diane Lahn**

Bert & Joyce Legum*

Rachelle Millison (G)

Yale & Sandra Nesson (B)

Lou & Gloria Padersky

Stanley & Carol Sacks

Dorothy Zimmerman

Evelyn Eisenberg

Jules & Patti Wainger

Carol Ann Kulikowski

Bernie & Helene

Grablowsky**

Howard & Susan Hackeman (B)

Alan & Norma Jaffe*

Marty & Ina Leiderman (B)

Adele Rhodes & Ida Rines*

Bea Minskoff

Harold Pollack

& Jerry Pollack (B)

Frances Ornoff

Frances Bangel

Herbert & Carolyn Bangel*

George & Amy Ginsburg

Arnold & Miriam Hoffman

Mark & Brenda Kozak**

Harold Zedd*

Morton Samuels

Marc Samuels (G)

IN HONOR OF

Alan Jaffe's birthday

Mannie & Judy Smith*

Liora Kaplan's bat mitzvah

Lawrence Steingold (B)

Irwin Kroskin's 80th

birthday

Chuck & Linda Marcus

Steve & Nancy Schreier

Joan London's new home

Arnold & Miriam Hoffman

SPEEDY RECOVERY TO

Jack Barr

Larry & Natalie Saunders (B)

Ethel-Raye Greenspan

Ethel Goldman

Joyce Salzberg

Arthur & Emmy Lou Kreger*

Sam Werbel

Bernie & Helene Grablowsky**

BERNARD MARTIN

MEMORIAL FUND

IN HONOR OF

Barry & Kay Kesser, happy

Thanksgiving

Elsie Martin*

BEVERLY RAFAL

WERBEL FUND TO

HOUSE THE HOMELESS

IN MEMORY OF

Alec Engelstein

Sam & Diane Werbel**

Bea Minskoff

Ben & Iris Moss*

Morton Samuels

Marc Samuels (G)

Beverly Rafal Werbel

Ed Jay Rafal (G)

IN HONOR OF

Irwin Kroskin's 80th birthday

Sam & Diane Werbel**

SUNDAY SCHOOL FUND

IN MEMORY OF

Carol Ann Kulikowski

Norman Soroko

RABBI ARNOWITZ

DISCRETIONARY FUND

IN MEMORY OF

Ramon Cohen

Jeannie Molofsky*

Jules & Patti Wainger

IN HONOR OF

Rabbi Arnowitz, thank you

Andy & Leslie Auerbach (G)

SPEEDY RECOVERY TO

Mrs. William Stein

Ellyn-Mae Friedman

RABBI RUBERG

DISCRETIONARY FUND

IN MEMORY OF

Ramon Cohen

Ellyn-Mae Friedman (B)

Sonny & Betty Lou Legum*

IN HONOR OF

The Ruberg Family, happy

Hanukkah

Vivian Forman*

CANTOR

DISCRETIONARY FUND

IN MEMORY OF

Morton Samuels

Marc Samuels (G)

JAY BARR ART FUND

SPEEDY RECOVERY TO

Jack Barr

Bruce & Lauren Barr*

Clay Barr*

SHARON SPITALNEY

SCHOLARSHIP FUND

IN MEMORY OF

Frances Ornoff

Andy & Leslie Auerbach**

DR. EUGENE KANTER

MEMORIAL FUND

IN MEMORY OF

Gayle Bennett

Alan & Beverly Frieden (B)

FREDA & TAVIA

GORDON MEMORIAL

FUND

IN HONOR OF

The birth of Daniel

Gordon's great

granddaughter

Arthur & Emmy Lou Kreger*

HIGH HOLIDAY PRAYER

BOOK

IN MEMORY OF

Ramon Cohen

Neil & Gina Rose

SIDDUR LEV SHALEM

IN MEMORY OF

Ramon Cohen

Marylin Lacey

Marion Bear Ticatch

TREE OF LIFE

IN HONOR OF

Irwin Kroskin's 80th birthday

Mark & Betty Greenspan,

Michael & Rena Myers,

Stuart & Mickey Held

Minyan Service Times

During the month of January minyan is at Temple Israel. (No Saturday evening services.)

All morning services and Saturday morning Shabbat services will be at Beth El.

Mornings: Monday - Friday, 7:15 am at Beth El. Minyan on Sunday mornings is at Beth El and will begin at 8:00 am. On days with Religious School an additional non-traditional minyan will meet at Beth El at 9:15 am.

Friday evenings are at Beth El

Saturday minchah service immediately following Kiddush lunch.

As always, Sunday evening services at 5:45 pm at Temple Israel

Condolences to

Rita Cohen, Bruce Cohen, Jack Cohen and Helen Laibstain on the loss of their husband, father, and brother **Ramon Cohen** of blessed memory.

Marsha Merkle on the loss of her mother, **Frances Ornoff** of blessed memory.

Jerry Minskoff on the loss of his mother, **Bea Minskoff** of blessed memory.

Danny Griff on the loss of his mother, **Joan Griff** of blessed memory.

REMEMBRANCE DONATIONS

* = Chai = \$18

** = Double Chai = \$36

B = Bronze = \$19 - \$49

S = Silver = \$50 - \$99

G = Gold = \$100 or more

January Yahrzeits

*We record the sacred memory of the following departed members
of the families of our congregation on the occasion of yahrzeit.
The names of our beloved departed are read from the pulpit at each evening minyan.*

<u>JANUARY 1</u> Jacob Banks Israel Broudy Lois Ginsburg Benjamin Hurwitz Lena Kreger	<u>JANUARY 7</u> Frances Barr Max Bass Sacharia Finestone Abe Galinsky Samuel Ganderson Irwin Goldstein Lenore Holsveig Bessie Hurwitz	<u>JANUARY 13</u> Meyer Cohen Nat Cohen Annie Fivel Frank Hyman Maris January Miriam Katz Mary Konikoff Burnley Roesen Israel Salber Joseph Schonfeld Abraham Wise	Barnett Lifland Abraham Mogul Goldie Mogul Julius Peck Abraham Peltz Anne Raffel Solomon Shapiro Julius Shipowitz Harry Shuman Haim Soroko	<u>JANUARY 22</u> Jennie Feldman Chana Friedman Ben Grossberg Faiga Herskowitz Helen Kozak Bessie Laderberg Nathan Leiderman Hanns Loewenbach Carolyn Sherwin	<u>JANUARY 27</u> Barbara Alter Rebecca Cushner Ruth Fine Harry Goodman Goldye Levitin Mollie Rudlin
<u>JANUARY 2</u> Bernard Batleman Loretta Cohen Lenore Dubroff Frances Epstein Pauline Foote Minnie Goodman Jeanne Spector	<u>JANUARY 8</u> Bertha Brownstein Dora Galumbeck Adele Gilbert Toba Katz Rachel Ossen Fannie Reich Alfred Schulman Isadore Schwartz Arthur Siegel	<u>JANUARY 14</u> Lena Altschul Sarah Barr Fannie Blumenson Sol Chandgie Meyer Friedman Albert Josephson Annie Myers Ida Roesen Frank Salasky Joseph Steingold Benjamin Traub Ezzy Wyron	<u>JANUARY 18</u> David Faust Jeanette Katz Sadie Leibowitz Joseph Levinson Morris Miller Bertha Nathan Minnie Pudolsky Marlene Robbins Emanuel Yavner	<u>JANUARY 23</u> Braham Baum Rebecca Berlind Millard Fisher Sidney Keller Samuel Levy Ray Massey Boruch Rudlin Leo Vergott Paul Wainger	<u>JANUARY 28</u> Samuel Frohman Rose Goldstein Allan Goretzky Blanche Heller Celia Kaplan Bessie Rosenfeld Edwin Waitzer Shirley Waitzer
<u>JANUARY 3</u> Jeanne Baum Ray Bloom Rosalye Fried Eugene Kamer Abraham Levine Betty Morris Samuel Myers Ida Rafelman Dora Swersky Jesse Swersky Hyman Zfass	<u>JANUARY 9</u> Lewis Barber Hanna Konikoff Hannah Myers Irwin Waranch	<u>JANUARY 15</u> June Davidson Shannandoah DeLeon Brina Drucker Albert Glickman Alex Herman Fannie Russnow Moe Schwartz Sidney Semel Freda Tessler Bennett Weinstein	<u>JANUARY 19</u> Tillie Caplan Morris Comess Albert Diamonstein Hyman Frieden Pam Green Moses Higger Jeanette Korel Dena Laderberg Marilyn Minskoff Jeanne Rabinowitz Lillian Rosen Ilse Saupe Esther Sherman	<u>JANUARY 24</u> Benjamin Block Nathan Goldin Harry Kaplan Jennie Lesser Minnie Levin Meyer Marcus Samuel Morris Menasha Nelson Charlotte Taette Hillel Turok Maxwell Zedd Lena Lind	<u>JANUARY 29</u> Ben Cooper Yale Dolsey Lillie Friedman Fanny Goldin Edith Lindsey Abe Pudolsky David Smith
<u>JANUARY 4</u> Barbara Golsen Leah Gordon Mary Hirschfeld Isaac Ossen Harry Rosen Sylvia Saunders Sharon Sperling Arlene Stein Helen Weintrob	<u>JANUARY 10</u> Ida Frieden Rachel Higger Esther Horwitz Herman Laibstain Eliot Landau David Mervis Joe Reshefsky Isaac Rosenberg	<u>JANUARY 16</u> Stanley Bangel Harry Kirsch Sarah Land Pauline Mullen Harry Oser Celia Yavner	<u>JANUARY 20</u> Jack Bennett Sonia Chenman Gussie Katz Dvora Panzel Louis Savage Allen Stern Sophie Streen	<u>JANUARY 25</u> Rebecca Cohen Samuel Frieden Jean Kantor Helen Kehayas Mae Klein Sadie Perlin Al Ruden Kate Shuman Alma Spivey	<u>JANUARY 30</u> Telzy Tenner Kyle Burnat Herman Kaplan Sally Moses
<u>JANUARY 5</u> Harry Clark Oscar Coplon Dora Mirman Melvin Orloff Frances Smith Samuel Weisberg	<u>JANUARY 11</u> Sarah Bernstein Louis Deitch David Diamonstein Abraham Dobrinsky Patrice Feldman William Krell Bernice Mandell Sigmund Myers Ivan Nachman Pearl Schoenhaut Isaac Thomashefsky	<u>JANUARY 17</u> Rosetta Butler Gerald Chalem Eleanor Friedman Ida Grossberg Benjamin Hershman Richard Hirschfeld Benjamin Hornstein Henrietta Kanter Hyman Katz Anna Kirsch Louis Legum	<u>JANUARY 21</u> Cecelia Dolsey Anne Dunn Joseph Frank Anne Friedman Sam Kramer Albert Levy Judith Mervis Frank Newman Martin Sheintoch Rebecca Sneider	<u>JANUARY 31</u> Meyer Clark Freddie Iskowitz Harriet Kesser Joseph Krukin Rhea Legum Arthur Lerman Lillian Stein	<u>JANUARY 31</u> Meyer Clark Freddie Iskowitz Harriet Kesser Joseph Krukin Rhea Legum Arthur Lerman Lillian Stein
<u>JANUARY 6</u> Joel Abraham Ida Berman Miriam Gordon Murray Kantor Nathan Katz Bernard Landau Charles Littman Bernard Martin Stanley Martin Milton Morewitz Frances Moskowitz Reva Sprung Samuel Steingold	<u>JANUARY 12</u> Sarah Abraham Samuel Chovitz Walter Evans Merle Fields Leah Geffen Maury Kroll Bette Lombart Baruch Tessler Frances Woodman		<u>JANUARY 26</u> Ira Jacobs Yetta Katz Samuel Melworth Morris Miller Dorothy Mindel Clara Schoenholtz Dinah Tarshis		



422 Shirley Avenue, Norfolk, VA 23517

Non-Profit Org.
U.S. Postage
PAID
Norfolk, VA
Permit No. 1860

OR CURRENT OCCUPANT

Did you know
you can get your
bulletin on the Web?
bethelnorfolk.com

Hands United Building Bridges
Celebrating Dr. Martin Luther King, Jr.
City on A Hill Forum:
An Interfaith Dialogue on Race & Politics

JOIN US FOR THE CONVERSATION

Panelists will include:
Rabbi (Dr) Michael Panitz, Temple Israel
Bishop (Dr) B. Courtney McBath, Calvary Revival Church
Imam Rachid Kould, Crescent Community Center
Dr. Tahani R Amer, Muslim

.....

Sunday, January 7, 2018 | 5pm –7pm
Congregation Beth El Synagogue
422 Shirley Ave; Norfolk, VA 23517
Free Admission | hor d'oeuvres will be served | Please RSVP

www.theurcnorfolk.com/events/forum